

TRIPLE ROTARY SHAVER



Instruction Booklet

For your safety and continued enjoyment of this product, always read the instruction booklet carefully before using.

CONAIR MAN

Respect the Ritual™

SHV350 Series

READ THESE SAFETY PRECAUTIONS CAREFULLY BEFORE USING THE UNIT! SAFETY PRECAUTIONS

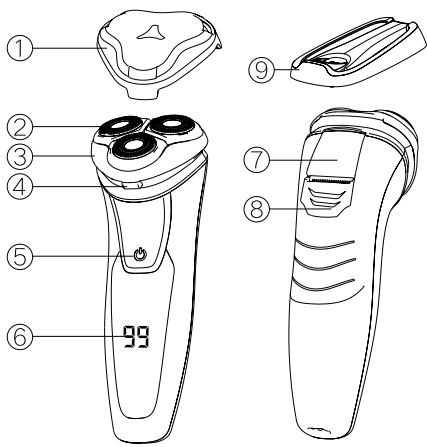
WARNING: The polyethylene bags covering the product or its packaging may be dangerous. Keep these bags out of the reach of babies and children. Never use them in cribs, children's beds, pushchairs or playpens. The thin film may cling to the nose and mouth and prevent breathing. A bag is not a toy.

WARNING: Do not use over or near sinks, bathtubs, showers or other containers with water. Store the unit in a dry place.

1. If you are using the unit in a bathroom, unplug it after you have finished using it. Using the unit close to a source of water can be dangerous, even if the unit is switched off. To ensure additional protection, have a residual current device (RCD) with a nominal trip current no higher than 30 mA installed in your bathroom. Ask your electrical fitter for advice.
2. Never immerse the unit in water or any other liquid.
3. If the power cord is damaged, it must be replaced by the manufacturer, an authorized service representative or a similarly qualified person to avoid a hazard.

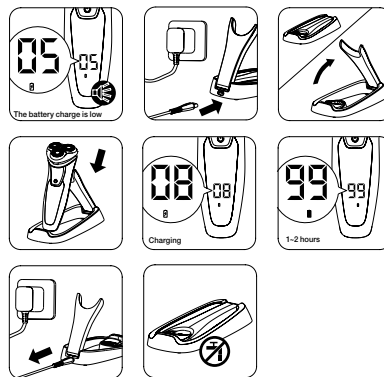
4. Do not use the unit if it has fallen or if it appears to be damaged.
5. Do not leave the unit unattended when it is plugged in or switched on.
6. Unplug the unit immediately if you have problems when using it.
7. Do not use any accessories other than those recommended by Conair.
8. Unplug the unit after each use and before cleaning it.
9. Avoid any contact between the unit's hot surfaces and your skin, in particular, your ears, eyes, face and neck.
10. Allow the unit to cool before storing.
11. To prevent damage to the cord, do not wrap it around the unit and ensure it is stored without twisting or folding it.
12. To reduce hazards, damaged power cords must be replaced by the manufacturer or an authorized service center.
13. This appliance is not intended for use by persons (including children) with reduced physical, sensory or mental capabilities, or lack of experience and knowledge, unless they have been supervised or instructed in the use of the appliance by a person responsible for their safety. Children should be supervised to ensure that they do not play with the appliance. **This appliance is not a toy. Keep away from children.**

PRODUCT FEATURES



1. Protective cap
2. Individually floating heads
3. Shaving unit
4. Shaving unit release button
5. ON/OFF
6. LED display
7. Sideburn trimmer
8. Pop-up trimmer switch
9. Charging base

HOW TO USE



CHARGING YOUR SHAVER

1. When the shaver is turned on, the LED display will light up and show the remaining operating time.
2. If you hear a beep and the charging icon starts to flash when using or after use, the battery is low and needs recharging.
3. Use the charging stand to connect the appliance to power supply as as in illustration above, or connect shaver with adapter to power supply directly.
4. Once charging is started, the charging icon will flash and the LED display will still show the remaining operating time. The remaining operating time will increase with charging time.
5. The charging icon will go off when the appliance is fully charged. At the same time, the LED will show 99 and the fully charged icon will be on. Be sure to stop charging when device is fully charged.
6. It takes about 3 hours for shaver to be fully charged. (Time may vary depending on the environment).

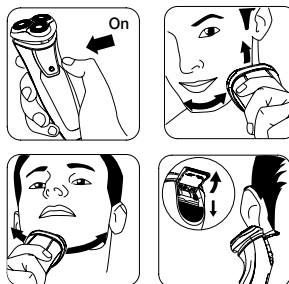
7. Store your adapter and charging stand for next use.

NOTE: Do not charge the appliance for longer than the recommended time.

PRESERVING THE BATTERIES

In order to maintain the optimum capacity of the rechargeable batteries, the appliance has to be fully discharged approximately every 6 months. Then recharge the appliance to full capacity again. It will take about 3 hours.

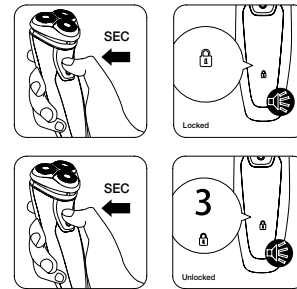
SHAVING



ATTENTION: Do not press too hard against the skin. Please note that after 8 seconds of use, the LED display will turn off automatically while the product will continue running.

1. Press the ON button to turn on the shaver. The LED display will light up as well.
2. Move the shaving heads over the skin using gentle circular movements to capture all the hairs.
3. Go against the direction of the facial hair growing, or shave in the same direction if your skin is sensitive.
4. To trim sideburns and mustaches, slide down the pop-up trimmer switch to release it, place it against the skin and move it downward applying gentle pressure.

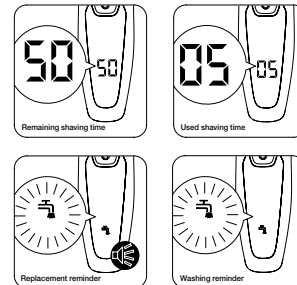
TRAVEL LOCK FUNCTION



1. To prevent the appliance from switching on unintentionally, press and hold down the ON/OFF button for 3 seconds until the lock icon appears and a beep sounds.

2. If you want to unlock your shaver, press and hold down the ON/OFF button for 3 seconds again. The lock icon will appear and start to flash for approximately 3 seconds while a beep sounds. Then the appliance will work normally when switched on.

LED DISPLAY



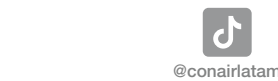
- SHV350CL Chile 5.0 V === 1.0A
- SHV350PE Perú 5.0 V === 1.0A
- SHV350AR Argentina 5.0 V === 1.0A
- SHV350AL Latino-América 5.0 V === 1.0A

RASURADORA
MARCA: CONAIRMAN
HECHO EN CHINA



ADVERTENCIAS DE SEGURIDAD
LEER MANUAL ANTES DE USAR

Manual and product references also available at: <http://www.conair.la>, <http://www.conair.com>



WE RECOMMEND THAT YOU READ THE INSTRUCTION MANUAL.

CHILE / PERU / AL CERTIFICATE OF WARRANTY

Congratulations! You have purchased a guaranteed CONAIR product. Conair and its brands, Cuisinart, Waring and CONAIR, extend the following service warranty, which entitles you to enjoy all the advantages that our network of Authorized Technical Services provides. Terms and Conditions of the Certificate of Warranty:

1. The warranty is valid from the date of purchase. To make it effective, the customer must present a proof of purchase and the Certificate of Warranty.
2. The warranty only applies to proven manufacturing defects. The product will be inspected and will be exchanged and/or repaired free of charge only if it presents an electrical or mechanical manufacturing defect within the warranty period.
3. The warranty does not apply:

- 3.1 If the product has been opened, disassembled or repaired by unauthorized personnel. The product should only be repaired by the network of Authorized Service Technicians.
- 3.2 If the product has been used for purposes for which it has not been designed.
- 3.3 If the damages are not manufacturing defects, e.g., impact damage, spill damage, insect damage or any other damages found during inspection. If the product has been misused, i.e., used contrary to what is indicated in the instruction manual.
- 3.4 If the damages were caused by accidents, accidental or deliberate acts, or voltage 10% greater or lesser than the one indicated on the product's rating plate.
- 3.5 If the damages are due to the normal wear of parts and/or accessories during normal use.
- 3.6 If the damages were caused to accessories and parts during improper use of the product.

**We recommend that you read the instruction manual.

ARGENTINA WARRANTY

Congratulations! You have purchased a guaranteed CONAIR product.

Warranty conditions:

1. **The warranty is valid for 12 months from the date of purchase. To make it effective, you must submit the purchase invoice, which must be within the warranty period.**
2. The warranty only applies to proven manufacturing defects. The product will be inspected and will be exchanged and/or repaired free of charge only if it presents an electrical or mechanical manufacturing defect within the warranty period.
3. The warranty does not apply:
 - 3.1 If the product has been opened, disassembled or repaired by unauthorized personnel. The product should only be opened, inspected and/or repaired by the network of Authorized Service Technicians.
 - 3.2 If the product has been used other than for domestic/household use, and/or for purposes for which it has not been designed.
 - 3.3 If the damages are not manufacturing defects but damages caused by impact, spills or spill residues on parts, insects, or any other external factors, as demonstrated during inspection; as well as damages caused by misuse, contrary to what is stated in the instruction manual.
 - 3.4 If the damages or failures were caused by accidents, unforeseen or deliberate causes, electric shocks, voltage fluctuations and/or voltage 10% greater or lesser than the one indicated on the product's rating plate.
 - 3.5 If the damages or failures were caused by accessories and parts broken or damaged during improper use of the product.

BATTERY SAFETY INFORMATION

1. This device requires one lithium ion battery.
2. Batteries are not to be removed by the consumer unless instructed by the manufacturer.
3. Since batteries are sensitive to high temperatures, when storing them, keep the device in a cool dry place.
4. Never put batteries into a fire.
5. Switch off devices after use.
6. Keep batteries away from children, especially the batteries that are small enough to ingest.
7. If a battery is ingested, seek immediate medical help.
8. Never open, crush, puncture or disassemble batteries.
9. Dispose of batteries according to any State and Local regulations.
10. Do not dispose of rechargeable batteries as solid waste.

CAUTION

NEVER allow the power-supply cord to be pulled, twisted, or severely bent. Never wrap the cord tightly around the appliance. Damage will occur at the high flex point of entry into the appliance, causing it to rupture and short circuit. Inspect the cord frequently for damage. Stop use immediately if damage is visible or if unit stops or operates intermittently.

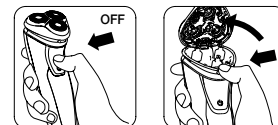
STORAGE

When not in use, your appliance is easy to store. Store your appliance out of reach of children, in a safe and dry location. Do not jerk or strain cord at plug connections.

ATTENTION: When the batteries don't have sufficient power and are affected by environmental factors or temperature, the battery remaining time may not be precise.

1. When turned on, the LED display shows the remaining battery time.
2. After use, when pressing the ON/OFF button, before turning off, the LED display will show the used shaving time.
3. After a few times using the product, if any hair residue gets stuck in the hair chamber, the LED display will show a small tap icon and the device will start making a beeping sound to indicate that the shaving unit needs to be cleaned.
4. Clean the shaving head regularly, whenever the tap icon appears on the LED display.

CLEANING AND MAINTENANCE



www.conairlatam.com

©2021 Conair LLC
Origen: China

Colombia

Importado por: Continente S.A.S.
Calle 69 # Via 40-301,
Barranquilla, Atl, Colombia
Línea Servicio al Cliente: 018000415385
sac@continente.com.co

Argentina

Importa Distribuye y Garantiza Newsan S.A.
Roque Pérez 3650-C1430FBX
C.A.B.A. República Argentina

Chile

Importado por : VENTIS SPA
El Estero 5533, Condominio El Estero,
Penalolen, Santiago, Chile.
TEL: +(569)78088043/ +569 9
61855284/+56975374879
RUT : 76229287-4

Perú

Importado y Distribuido por: MACROTEL S.A.C.
Av. Arequipa 4130 Dpto. 205 Miraflores, Lima, Perú.
RUC : 20546288979

211P079688

IB-17354