

INFINITI PRO  
BY CONAIR

## 2-IN-1 STAINLESS STEEL STYLER



STRAIGHTENING AND CURLING  
READY IN 30 SECONDS

ST480CL

## IMPORTANT SAFETY INSTRUCTIONS

When using electrical appliances, especially when children are present, basic safety precautions should always be taken, including the following:

### READ ALL INSTRUCTIONS BEFORE USING

### KEEP AWAY FROM WATER

**DANGER** — Any appliance is electrically live even when the switch is off. To reduce the risk of death by electric shock:

1. Always unplug appliance immediately after using.
2. Do not use while bathing or in a shower.
3. Do not place or store appliance where it can fall or be pulled into a tub or sink.
4. Do not place in, or drop into water or other liquids.
5. If an appliance falls into water, unplug it immediately. Do not reach into the water.

**WARNING** — To reduce the risk of burns, electrocution, fire, or injury to persons:

1. This appliance should never be left unattended when plugged in.
2. Do not pull, twist, or wrap line cord around appliance, even during storage.
3. This appliance should not be used by, on or near children or individuals with certain disabilities.
4. Use this appliance only for its intended use, as described in this manual. Do not use attachments not recommended by the manufacturer.

5. Never operate this appliance if it has a damaged cord or plug, if it is not working properly or if it has been dropped or damaged, or dropped into water. Return the appliance to an authorized service center for examination and repair.
6. Keep the cord away from heated surfaces.
7. Never use while sleeping.
8. Never drop or insert any object into any opening or hose.
9. Do not use outdoors or operate where aerosol (spray) products are being used or where oxygen is being administered.
10. Unit is hot when in use. Do not let heated surfaces touch eyes or skin.
11. Do not place the heated unit directly on any surface while it is hot or plugged in.
12. Never block the air openings of the appliance or place on a soft surface such as a bed or couch, where the air openings may be blocked. Keep the air openings free of hair, lint and other debris.
13. Do not use an extension cord with this appliance.
14. Do not touch hot surfaces of the appliance. Use handles or knobs.
15. Do not attempt to touch the housing of your appliance near the straightening plates, as it is hot when in use.
16. Do not use with a voltage converter.
17. Warning: Make sure to unplug the unit after every use.
18. This appliance is not a toy. Keep away from children.

## SAVE THESE INSTRUCTIONS

## SAFETY INSTRUCTIONS

1. **WARNING:** hot surfaces! Do not touch the metal parts of the appliance with fingers. During use, take care not to bring the appliance into contact with the scalp, face, ears or neck.
2. **WARNING!** polyethylene bags containing this product or its packaging can be dangerous. To avoid the risk of suffocation, keep these bags out of the reach of babies and children. A polyethylene bag is not a plaything.
3. Do not use this appliance near, bathtubs, showers, basins or other vessels containing water.
4. If the appliance is used in a bathroom, unplug it after use. Leaving the appliance near a source of water may be dangerous, even if the appliance is off. For additional protection, the installation of a residual current device (RCD) having a rated residual operating current not exceeding 30 mA is advisable in the electrical circuit supplying the bathroom. Ask your electrician for advice.
5. Do not immerse the appliance in water or any other liquid.
6. Stop using the appliance immediately if the cord is damaged. The power supply cord should not be replaced by the end user. The power supply cord should only be replaced by an authorized Service Center.
7. Do not leave the appliance unattended while it is plugged in or in use.
8. Do not let the appliance's hot surfaces touch eyes or skin.

9. This appliance is not intended for use by persons (including children) with reduced physical, sensory or mental capabilities, or lack of experience and knowledge, unless they have been given supervision or instruction concerning use of the appliance by a person responsible for their safety. Children should be supervised to ensure they do not play with the appliance.
10. Allow the appliance to cool before storing.
11. After use, do not wind the cord around the appliance as this may damage it. Instead, roll the cord up loosely and let it rest by the side of the appliance.

## PRODUCT FEATURES

1. Black titanium ceramic-coated plates: 28 mm x 120 mm.
2. On/off switch - Automatic switch off.
3. Temperature selector: 5 levels from 150 to 230°C.
4. LED indicator lights showing the temperature level selected.
5. Ionic function: Negative ions are diffused over the hair when straightening to reduce friction and static electricity.
6. Locking system for optimal protection and storage.
7. Removable tips ensure precision straightening or curling.
8. Swivel cord



## OPERATING INSTRUCTIONS

Use on Alternating Current (50-60 hertz) only. This unit is designed to be operated at 220-240 V~.

**NOTE: DO NOT USE THIS STYLING APPLIANCE ON HAIR EXTENSIONS.**

### STRAIGHTENING BASICS

For optimal precision straightening or curling, use the removable tips. Position them before switching on the appliance, sliding them onto the front of each plate and into place (Fig. 1)

- Untangle hair thoroughly. Clip the upper layers out of the way, so that you can start with the underneath sections.
- Plug in the appliance and switch on.
- Use the temperature selector to select the desired temperature.

As a rule, we recommend using a lower temperature for fine, bleached and/or damaged hair, and a higher temperature for curly, thick and/or difficult-to-style hair. All hair is different. We recommend using the lowest temperature at first use. Thereafter, you can gradually increase the setting if necessary. As a rough guide, see the table below:

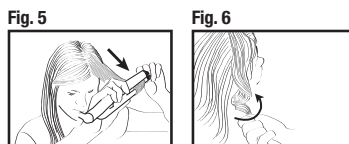
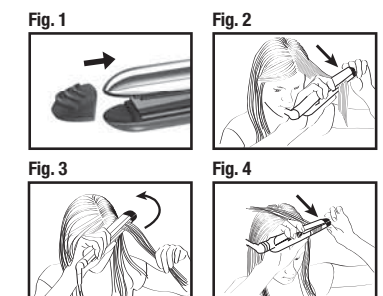
TEMPERATURE	HAIR TYPE
150 – 170 °C	Fine, bleached and/or damaged hair
170 – 210 °C	Normal, colored and/or wavy hair
210 – 230 °C	Thick and/or very curly hair

• The indicator lights flash until the desired temperature is reached.

**Straightening:** Take up a section about 5 cm wide and place it between the 2 heating plates, near the roots of your hair. Close the appliance and keep the plates closed with your other hand, taking care not to touch them. Slowly glide the appliance over the length of the section, from the roots to the tips (Fig. 2). Repeat again if necessary.

• Let the hair cool down before you comb it.  
• After use, switch off and unplug the appliance. Allow the appliance to cool before storing.

**Curling:** Take up a section about 3 cm wide and place it between the 2 heating plates, near the roots of your hair. Turn the appliance 180° upwards (or downwards, depending on the curl desired) (Fig. 3). Slowly slide the straightener along the whole length of the hair, from the roots to the tips, using your other hand to hold the plates properly closed against the hair (Fig. 4-5). Remove the straightener and use your fingers to twist the section again so that it takes its natural position (Fig. 6). Repeat if necessary. You may wish to set the curls using a light misting of hairspray.



- Notes:**
- When using the unit for the first time, you might notice a distinct odor: this is common and will disappear by the next use.
  - Each time you use the appliance, you may see some a small amount of steam given off. Do not be concerned, this could be because of evaporation of the natural oils of the hair, residual hair products (leave-in hair products, hairspray, etc.) or excess moisture evaporating from your hair.
  - A heat protection spray can be used to provide optimal protection of the hair.
  - It is quite normal to hear a slight noise, similar to a crackle: this is the characteristic noise of the ion generator.

**AUTOMATIC SHUT OFF**  
Never leave your flat iron on and unattended. However, should you fail to turn the unit off, it will shut itself off automatically within 60 minutes at 60 Hz, 72 minutes at 50 Hz.

## USER MAINTENANCE

Your flat iron is virtually maintenance free. No lubrication is needed. Keep all vents and openings clear of dirt and dust. If cleaning becomes necessary, disconnect the unit from the power source, allow to cool and wipe exterior with a cloth. If any abnormal condition occurs, unplug the unit, allow it to cool, and return it for repair to an authorized service representative only. No repairs should be attempted by the consumer.

### CAUTION

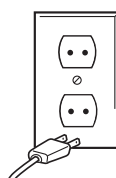
NEVER allow the power supply cord to be pulled, twisted, or severely bent. Never wrap the cord tightly around the appliance. Damage will occur at the high flex point of entry into the appliance, causing it to rupture and short circuit. Inspect the cord frequently for damage. Stop use immediately if damage is visible or if unit stops or operates intermittently.

### STORAGE

When not in use, your appliance is easy to store. Allow appliance to cool, then store in a safe, dry location, out of reach of children. Do not jerk or strain cord at plug connections. Do not wrap the line cord around the appliance. Allow the cord to hang or lie loose and straight at the point of entry into the appliance.

**WARNING:  
IF YOU THINK  
THE POWER IS OFF  
WHEN THE SWITCH  
IS OFF,  
YOU'RE WRONG.**

## KEEP AWAY FROM WATER



Everyone knows that electricity and water are a dangerous combination. But did you know that an electric appliance is still electrically live even if the switch is off? If the plug is in, the power is on. So when you are not using your appliances, keep them unplugged.

## ALWAYS UNPLUG SMALL APPLIANCES

## PERU LIMITED TWO-YEAR WARRANTY

Congratulations You have purchased a guaranteed CONAIR product. Warranty conditions:

1. The warranty is valid for 24 months from the date of purchase. To make it effective, you must submit the purchase invoice, which must be within the warranty period.
2. The warranty only applies to proven manufacturing defects. The product will be inspected and will be exchanged and/or repaired only if it presents any electrical or mechanical manufacturing defect.
3. The warranty does not apply:
  - 3.1. If the product has been opened, disassembled or repaired by unauthorized personnel.
  - 3.2. If the product has been used for purposes for which it has not been designed.
  - 3.3. If the damages are not manufacturing defects, e.g. impact damage, spill damage, insect damage or any other damages found during inspection.
  - 3.4. If the product has been misused, i.e. contrary to what is indicated in the instruction manual.
  - 3.5. If the damages were caused by accidents, accidental or deliberate acts, or voltage 10% greater or lesser than the one indicated on the product's rating plate.
  - 3.6. If the damages are due to the normal wear of parts during normal use.
  - 3.7. If the damages were caused to accessories and parts during improper use of the product. We recommend that you read the instruction manual.

**IMPORTANT: PURCHASE INVOICE. ONLY ARTICLES ACCOMPANIED BY THE INVOICE FROM THE STORE THAT SOLD THE ITEM WILL BE ACCEPTED.**

## CHILE CERTIFICATE OF WARRANTY

Congratulations You have purchased a guaranteed CONAIR product. Conair and its brands: Cuisinart, Waring and CONAIR, extend the following service warranty, which entitles you to enjoy all the advantages that our network of Authorized Technical Services provides. Terms and Conditions of the Certificate of Warranty:

1. The warranty is valid from the date of purchase. To make it effective, the customer must present a proof of purchase and the Certificate of Warranty.
- 2.- The warranty only applies to proven manufacturing defects. The product will be inspected and will be exchanged and/or repaired only if it presents any electrical or mechanical manufacturing defect.
- 3.- The warranty does not apply:
  - 3.1.- If the product has been opened, disassembled or repaired by unauthorized personnel. The product should only be repaired by the network of Authorized Service Technicians.
  - 3.2.- If the product has been used for purposes for which it has not been designed.
  - 3.3.- If the damages are not manufacturing defects, e.g. impact damage, spill damage, insect damage or any other damages found during inspection. If the product has been misused, i.e. contrary to what is indicated in the instruction manual.
  - 3.4.- If the damages were caused by accidents, accidental or deliberate acts, or voltage 10% greater or lesser than the one indicated on the product's rating plate.
  - 3.5.- If the damages are due to the normal wear of parts and/or accessories during normal use.
  - 3.6.- If the damages were caused to accessories and parts during improper use of the product.

\*\*We recommend that you read the instruction manual.

**IMPORTANT! PLEASE KEEP THIS CERTIFICATE OF WARRANTY, STAMPED BY THE ESTABLISHMENT WHERE THE PRODUCT WAS PURCHASED. YOU WILL BE REQUIRED TO PRESENT IT FOR ANY CLAIM UNDER THIS WARRANTY.**

**MODEL #: ST480CL**  
**SERIAL #:** \_\_\_\_\_  
**DATE OF PURCHASE:** \_\_\_\_\_  
**INVOICE #:** \_\_\_\_\_  
**THE WARRANTY PERIOD IS INDICATED ON THE PRODUCT BOX**  
**VENDOR'S NAME AND STAMP:** \_\_\_\_\_

**CLIENT'S SIGNATURE AND ID #** \_\_\_\_\_



©2017 Conair Corporation  
Origen: China  
Denominación: Plancha de Pelo  
Marca: InfinitiPro by Conair  
Datos Técnicos  
Tensión: 220-240 V~  
Frecuencia: 50-60 Hz  
Potencia: 51 W

**Chile**  
Importado por Conair Comercializadora Chile LTDA  
Vitacura 2670, Piso 15,  
Las Condes, Santiago, Chile

**Peru**  
Importado por Conair Perú S.R.L.  
Av. 2 de Mayo NRO. 1321 URB.  
Orrantía-San Isidro  
Lima, Peru

17IP031675

IB-15398

